

López de Ayala Theatre



CONSORCIO "Teatro López de Ayala"
Paseo de San Francisco, 1-1º Dcha.
06002 • BADAJOZ

Tel (+34) 924 013 140
Fax (+34) 924 013 142

www.teatrolopezdeayala.es
tecnico@teatrolopezdeayala.es



STAGE:

Dimensions of the stage of the Lopez de Ayala theatre

PROSCENIUM 13m wide x 8.5m high to main border

DEPTH: 12,55m from tie to wall

WIDTH: 17,70m

HEIGHT TO GRID: 28m

WINGS Left =3,61m Right =3,65m

DRESSING ROOMS

Basement: Under the stage there is a dressing room for musicians with capacity for 20 people.

Ground Floor: Two individual dressing rooms for quick changes at the foot of the stage.

First floor: Three dressing rooms for first figures with bathroom and hot water.

Second floor: Two large dressing rooms for choirs with capacity for 10 people each, with bathrooms enough in the hallway.

Third floor: Four individual dressing rooms with service and showers in corridor.

FLYING AND RIGGING SYSTEMS

1 Black curtain of 16x12m.

9 10x3m leg sets

9 Backstage

1 Grey cyclorama of 10x12m

1 white 16x12m fabric cyclorama

1 Acoustic shell for concerts

20 Manual Winding Pulls

8 Counterbalanced rope pulls

1 Movie Screen

1 Guillotine proscenium curtain

1 electrified American curtain

10 Metal rods

1000 Counterweights of 12,620Kg

100 Counterweights of 9,520Kg

56 Counterweights of 3,150Kg

75 Orchestra chairs

4 High benches

1 Fire curtain

1 Grotian Seinweg mid-tail piano

1 Young Chang upright piano

ACCESS

Loading/unloading dock with access from Pedro de Valdivia St. The loading/unloading is carried out directly to the stage.

The actors' entrance is located on Paseo de San Francisco,

and it leads directly to the dressing room area.

In La Chácena you will find the elevator that accesses to all the dressing room plants and bridges.

CAPACITY

The Theatre has a capacity of 752 seats distributed as follows:

Ground floor seating area: 454 seats

Seating area (disabled) 2 spaces

Amphitheatre: 248 seats

Patio Boxes: 6 with 12 chairs and 12 benches

Amphitheater Boxes: 6 with 12 chairs and 12 benches

LIGHTING

The technical availability in terms of lighting that the Theatre offers consists of the following elements:

Main Lighting desk: Hydra Scan 250 channels with 48 masters and 2 crossfaders.

Secondary Desk: Control PICCOLO 96 channels and 24 submaster.

Regulation: 72 channels of 2,5Kw each. 6 channels of 5KW each

Plugs and sockets:

Main socket for 380v and 400A dimmers at about 15m from the stage.

Main socket on stage 380v and 125A (left wing).

Auxiliary 220v and 10A sockets with Schuko plug in right side, bottom and left side.

Electrification:

Four electrified rods with 20 regulated sockets each one of 10A numbered 1 to 80.

Left wing bridge with 16 regulated sockets 10A numbered 81 to 96.

Bridge on right wing with 16 regulated sockets for 10A numbered 97 to 112.

Left wing floor with 8 regulated 10A sockets numbered 113 a 120.

Stage flooring with 4 regulated 10A sockets numbered 121 to 124.

Right wing floor with 8 regulated 10A sockets numbered 125 to 132.

Three bridges over spectators area. The first one with 20 takes and the others two with 12 sockets each, all regulated to 10A and numbered from 133 to 176.

One left side aisle on the main floor with 12 regulated outlets from 10A each numbered 177 to 188.

One right-hand side aisle above the main floor with 12 outlets regulated from 10A each numbered 189 to 200.

Spotlights:

30 PC ADB 1000w with barndoors.

12 Fresnel ADB 1000w with barndoors .

8 PC ADB 2000w without barndoors

12 Robert Juliat cuttings 13°/42° 1000w.
3 Robert Juliat 614SX 16°/35° 1000w profile.
12 Robert Juliat 611SX 11°/26° 1000w profile
12 CCT 11°/26° 1000w profile for the frontal lighting bridge.
30 Par 64 1000w , lamps cp 61 and cp 62.
18 Asymmetric Cyclorama Battens 1000w .

Wiring:

2 DMX 512 signal hoses of 25m each.
30 Single pole hoses of different sizes.
2 Schuko-Schuko 12-line multipair hoses,
25m.
2 Multipair hoses of 12 lines, 25m. Harting-shuko
6 3-line hoses 10m. Shuko-Shuko

Structures:

8 Streets of 2m.
2 VMB towers with support for 8 spotlights.

Others:

4 Elation Arena Par Zoom LED lights 19x10W RGBW, Motorized zoom from 10° to 60°.
2 Moving head spotlights Elation Platinum Spot 5R Pro.
Phillips Msd Platinum 5r Lamp, 11°/42° zoom, 5° wheel
color, CMY, two gobo wheels, prism, iris and focus.

SOUND

Microphones:

Wireless Microphones:

Lem L-2000. Handheld Wireless Microphone 1

Sennheiser W135. G3 1

Condenser microphones:

Audio-Technica AT 897 (medium barrel type) 28cm 3

Sennheiser - 914 air type 3

Dynamic microphones.

Shure SM-58 5

Shure SM-57 2

• AKG D 770 1

• AKG D 3800 1

Various - Miscellaneous

Active injection box: Proel DBHCH 2

Feet of microphones as many as microphones

Micro stand stand (10cm) 4

Foot drum type 1

Methacrylate stand 1

Sennheiser stand microphones NEG14 2

Intercom system.

ALTAIR intercom system.

Control stations 2

Stage 2 seats

Access points 3

Wireless stations 4

Sound System

P.A. System

Meyer sound UPJ-1P 4

Meyer sound SW-M1D 1

On both wings on tripod and adapter on

U-shaped. Monitors

System. Dynacord

PFE 15.3 4

Yamaha SM12V2 2

Delay System

Dynacord PFE 12,3 2

(located in the high part of the amphitheater and at a distance of the 7.5m proscenium).

Monitor amplification:

Dynacord power amplifier PAA.560 3

Control System

Soundcraft SI-Expression 2 digital sound desk

Stage box Soundcraft 32 in 8 out.

Point-to-point wiring with cat 5. xlr-type connectors
rj45. Situation on the right wing.

YAMAHA 01V1 sound table (spare).

16 in 4 out analog hose. Distance 20m

Electrical part.

Main current panel:

125A differential

125A circuit breaker

Separate and insulated 25 mm earth connection.

Output with 50 mm terminals.

Output with Zetak 32 A

Right wing subframe with schukox4 outlets

MULTIMEDIA

HITACHI CP-WX8255A video projector.

With two sets of optics: wide-angle and telephoto.

(allowing to project from any space of the theatre)

Video sending system point to point by cat 5. System

Video extender. Aten mod_VE150A.

Apple MacBook Pro 13.3' computer

P O L E S

1st (Fire Curtain) 23cm 2nd Proscenium curtain 33cm

3rd (manual pull) 16cm 4th (manual pull) 33cm 5th

(Cinema Screen) 16cm 6^a (electrified and counterbalanced)

16cm 7^a (acoustic shell) 33cm 8^a (manual shot)

33cm 9^a (manual shot) 33cm 33cm 10^a (counterbalanced)

16cm 11^a (manual shot) 64cm 12^a (manual shot)

16cm 13^a (manual shot) 16 cm 14^a (acoustic shell)

16cm 15^a (electrified and counterbalanced) 16cm 16^a

(acoustic shell) 33cm 17^a (manual shot) 33cm

18^a (counterbalanced) 33cm 19^a (manual shot) 16cm
20^a (manual shot) 16cm 21^a (manual shot) 48cm 22^a
(manual pull) 16cm 23rd (manual pull) 16cm 24th
(acoustic shell) 16cm 25^a (electrified and
counterbalanced) 16cm 26^a (acoustic shell) 16cm
27th (manual pull) 33cm 28th (manual pull) 33cm 29th
(manual pull) 16cm 30^a (manual pull) 33cm 31^a
(electrified and counterbalanced) 33cm 32^a (manual shot)
48cm 33^a (acoustic shell) 16cm 34^a (counterbalanced)
16cm 35th (counterbalanced) 16cm 36th
(counterbalanced) 16cm 37^a (counterbalanced) 64cm
38th (counterbalanced) 16cm 39th (counterbalanced).

BASIC REGULATIONS

In order to improve the functioning of the Theatre, the following basic rules have been established.

The Theatre is staffed by technical staff and materials described in this datasheet, which is considered sufficient for the assembly and development of all types of shows, whatever their complexity. Any additions to any of the available material must be supplied by the Company.

Notwithstanding the foregoing, the following may exceptionally be established i.e. the complementation of technical material and/or equipment may be furnished by the Theatre, subject to prior agreement between the Company and Theatre Management.

The maximum assembly schedule is set for performances (night performance) from 8:00 a.m. To 2:00 p.m. and from 5:00 p.m. to the end of disassembly. In no case will this schedule be exceeded.

except in the event of prior agreement between the Company and the Management. The Company must notify Set Up requirements in advance

The technical data sheet and assembly schedule are considered sufficient for the purpose of establishing the shortest necessary assembly and rehearsal schedule possible.

All props and scenery materials for the performance must be supplied by the Company.

P E R S O N N E L

The Theatre has a large staff staff which guarantees the coverage of all service needed, technical and administrative aspects.

Director Miguel Murillo Gómez

Manager Miguel Ángel Jaraíz Fernández

Ana González Delgado Communication Office

Administration Javier Milara Mayoral

Administration Nina Martínez

Concierge Beatriz González Calderón

Maria del Carmen Cidoncha Box Office

Lighting Technician Benigno Rollán Rollán

Sound technician Jesús Morera

Head of Room Miguel Galván Reyes

Full service Miguel Galván S. L. U.



TECHNICAL CONTACT

TECHNICIAN:

tecnico@teatrolopezdeayala.es

CONTACT OFFICES

DIRECTOR:

mmurillo@teatrolopezdeayala.es

MANAGEMENT:

mjaraiz@teatrolopezdeayala.es

COMMUNICATION:

gabinetecomunicacion@teatrolopezdeayala.es

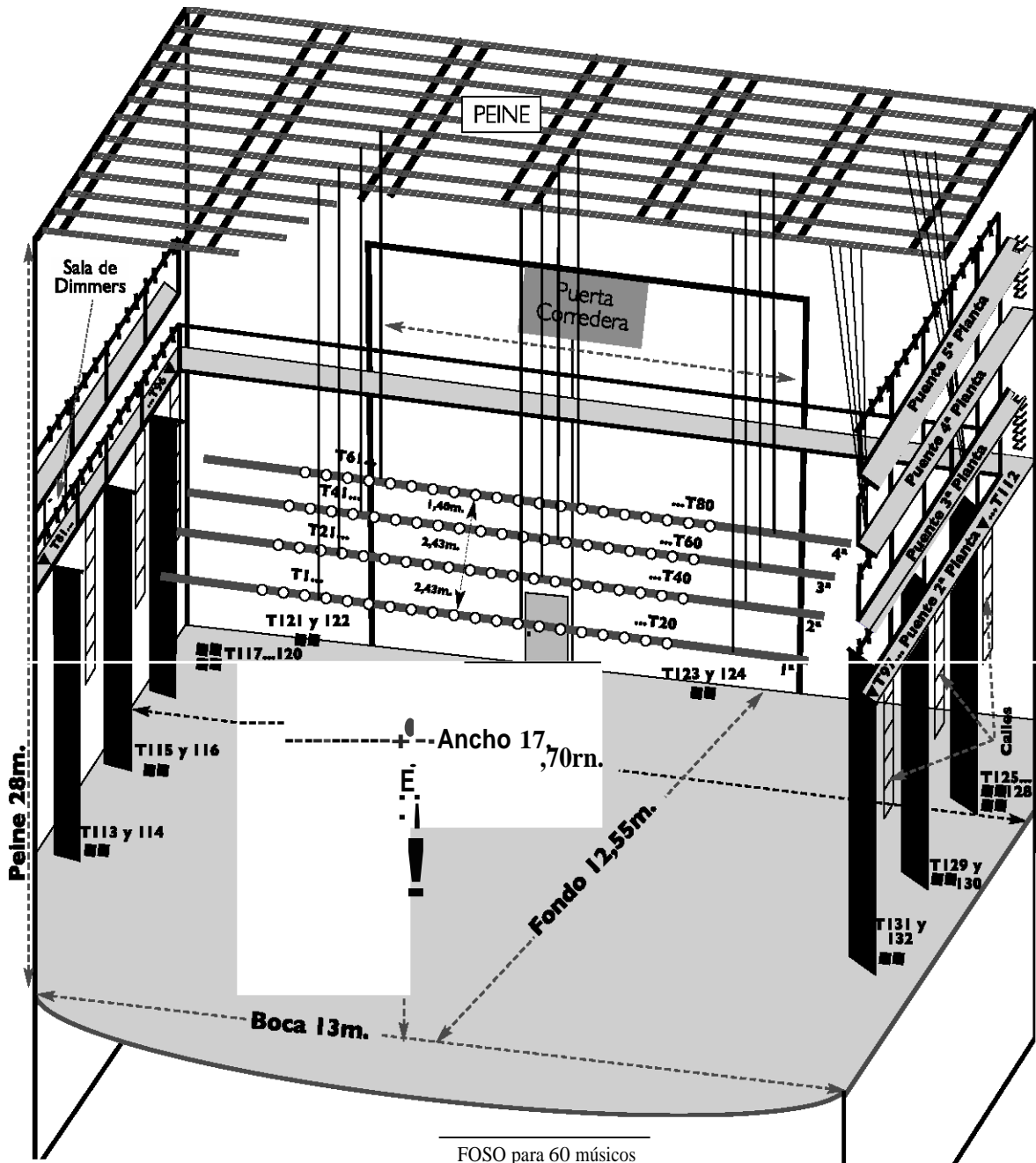
ADMINISTRATION:

imilara@teatrolopezdeayala.es

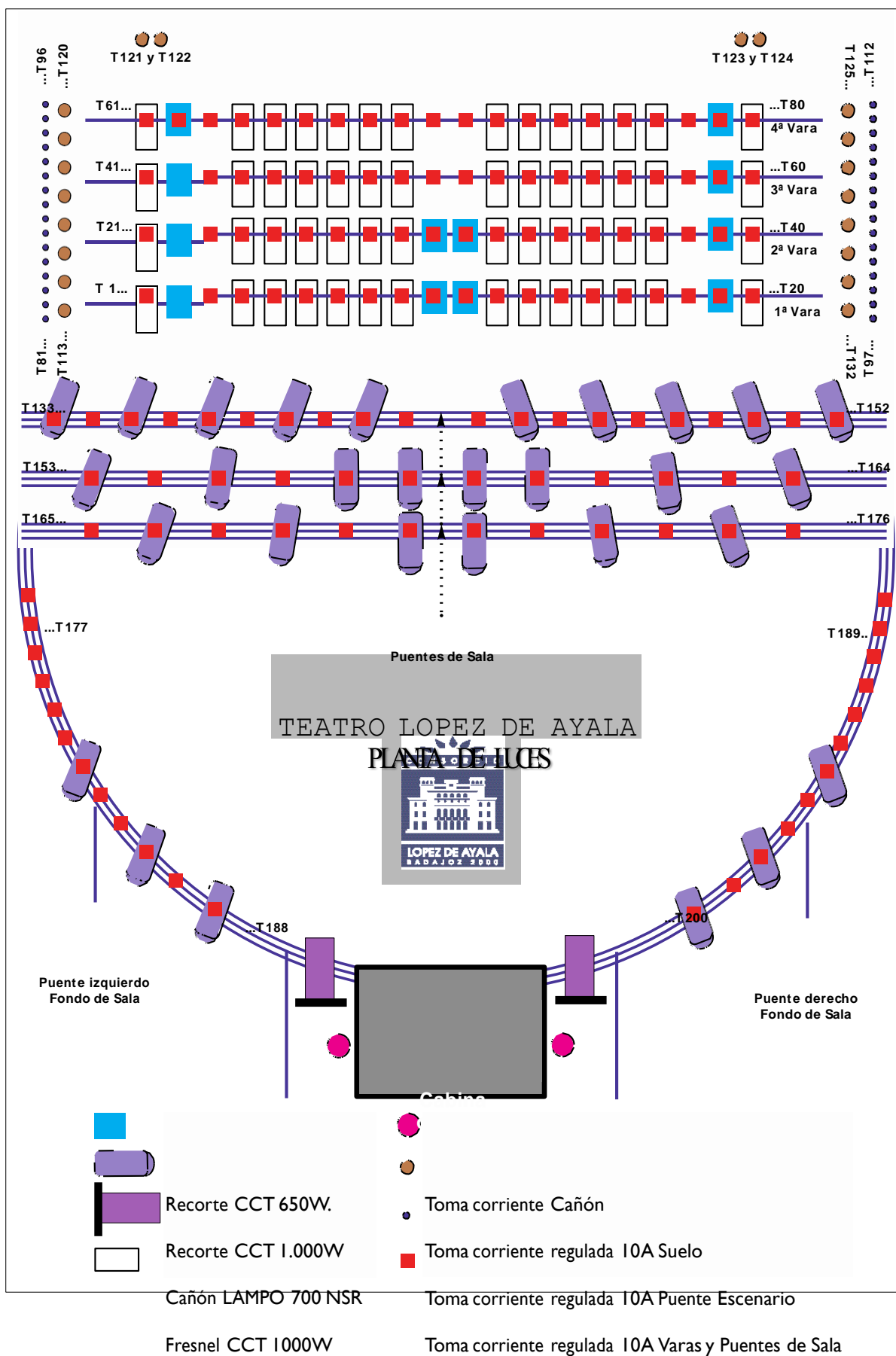
ATT. PUBLIC:

bgonzalez@teatrolopezdeayala.es

TEATRO LOPEZ DE AYALA PLANO DE ESCENARIO



- T= Toma de corriente regulada de 10A
 - Toma de corriente regulada de suelo
 - ''' Toma de corriente regulada de puente
 - Toma de corriente regulada de vara
- Existen otras 68 tomas reguladas en 5 puentes de Sala.





LOPEZ DE AYALA
PLANO DEL AFORO

Aforo:	
Patio de Butacas:	454
Pablos de Butacas:	24
Anfiteatro:	248
Pablos de Anfiteatro:	24
Dispositivos:	2
Total:	752

